



qtz7550 Big Construction Tower Crane Manufacturers Hoist Motor

Our Product Introduction

for more products please visit us on hycmtowercrane.com

Basic Information

- Place of Origin: China
- Brand Name: HYCM TOWER CRANE
- Certification: CE, ISO, GOST, CU-TR
- Model Number: QTZ500(7550) Tower Crane
- Minimum Order Quantity: 1
- Price: \$272900-284900 per set
- Packaging Details: Naked packing, 12*40'HQ containers.
- Delivery Time: 45 days after receiving the deposit or origin LC
- Payment Terms: TT, LC
- Supply Ability: 5 sets per month

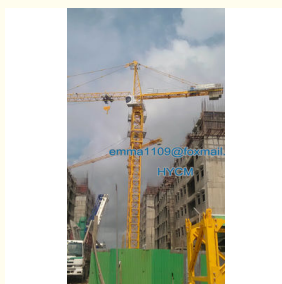


Product Specification

- Condition: 100% New
- Application: Buildings And Projects
- Type: Fixed With Tower Head
- Max. Load: 25 T
- Jib Length: 75 M
- Tip. Load: 5.0 T
- Mast section: 2.5*2.5*6 M
- Electric Box: Schneider
- Power Supply: 380V/50Hz, 415V/50Hz, 220V/50Hz Or According To Clients Need
- Color: Yellow, Red Or According To Clients Needs
- Highlight: **construction tower crane hoist motor, big tower crane manufacturers, topkit tower crane motor**



More Images



Product Description

qtz7550 Big Construction Tower Crane Manufacturers Hoist Motor

Performance parameters

- a. Max. jib length: 75m
- b. Max. lifting capacity 25t
- c. Max. hoisting capacity at jib tip: 5.0t
- d. Max. lifting moment 50000 t.m
- e. Max. free-standing height: 73m
- f. Max. working height of anchored crane: 200m
- g. Types of tower crane: stationary crane with embedded outriggers, stationary crane with embedded bolts, stationary crane with under-frame and mobile tower crane.

Specification

Rated Lifting Moment (KN.M)	5000
Model	QTZ500(7550) Tower Crane
Max. Lifting Load (t)	25
Tip Load (t)	5.0
Max. Lifting Height (m)	200
Free standing height (m)	73
Rope length (m)	600
Span (m)	75
Working range (m)	3 to 75
Slewing speed (r/min)	0-0.57
Trolley speed (m/min)	0-78
Jacking-up speed (m/min)	0.4
Counter jib length (m)	25.4
Power supply	380V/50Hz or according to client's requirements
Power Capacity (kw)	119
Electric switch box	Schneider
Main Material (mm)	H steel 293*266
Mast section (m)	2.5*2.5*6

Features

Durable, safe and low-maintenance cranes live up to the highest manufacturing standards. They are durable, operator-friendly, safe and have low maintenance requirements.

Quality materials for durability

Our components are traceable back to original premium-quality manufacturers, ensuring that they can easily be replaced when necessary. The quality of our components assure good resistance to fractures under conditions of high loading and low temperatures.

Quality steel mill-certified to European EN standards.

High-quality components from suppliers represented worldwide.

Protected: For safeguarding, all components are fitted into housing of the highest quality. Fully enclosed motors - IP55 - ensure long lasting motor insulation.

Easily identifiable: Cables and components are numbered or marked for easy identification, reducing maintenance time and costs.

Efficient: Virtually all internal electrical installation is done using multi-plug connections which reduces erection time.

Safety devices:

- 1): Hoist height limit
- 2): Over speed limit
- 3): Over load limit
- 4): Lifting moment limit
- 5): Slewing angle limit
- 7): Obstruction light (tip of jib, tower head)
- 8): Wind lock device.

The process features

1) Automatic submerged arc welding is adopted in the main section limbs and chord boom. It has high thermal efficiency, high penetration, high production efficiency, while reducing the pores and crack defects, increases the weld strength and the beautiful appearance.

2) We adopt carbon dioxide gas welding; it has heat concentrated, a small welding line, high strength and resistance to rust and crack. it can reduce stress and deformation, it has high strength and resistance to rust and crack.

3) Shot blasting is used for masts to strength the hardness of steel surface; enhance the paint adhesion and prolonging its life

Pictures



Jinan Avitt International Trade Co., Ltd-HYCM Tower Crane



0086-18254159408



emma1109@foxmail.com



hycmtowercrane.com

No.218-1,Building 8, Comprehensive Building, Zone 8, Dongshan Garden, Shuangshan Street, Zhangqiu District, Jinan City, Shandong Province, China