



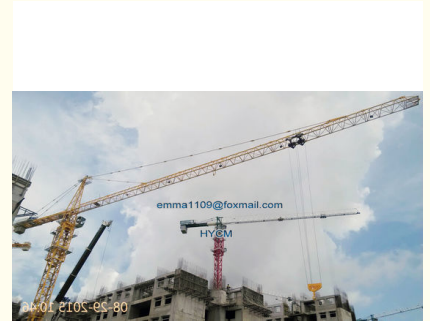
QTZ7050 Civil Construction Equipment Crane Tower 16T 5.0T Price

Our Product Introduction

for more products please visit us on hycmtowercrane.com

Basic Information

- Place of Origin: China
- Brand Name: HYCM TOWER CRANE
- Certification: CE, ISO, GOST, CU-TR
- Model Number: K500(7050) Tower Crane
- Minimum Order Quantity: 1
- Price: \$230000-247800 per set
- Packaging Details: Naked packing, 11*40'HQ containers.
- Delivery Time: 45 days after receiving the deposit or origin LC
- Payment Terms: TT, LC
- Supply Ability: 5 sets per month

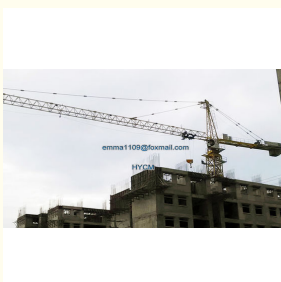


Product Specification

- Condition: 100% New
- Application: Buildings And Projects
- Type: Fixed With Tower Head
- Max. Load: 20 T
- Jib Length: 70 M
- Tip. Load: 5.0 T
- Mast section: 2.45*2.45*5 M
- Electric Box: Schneider
- Power Supply: 380V/50Hz, 415V/50Hz, 220V/50Hz Or According To Clients Need
- Color: Yellow, Red Or According To Clients Needs



More Images



Product Description

QTZ7050 Civil Construction Equipment Crane Tower 16T 5.0T Price

Introduction

- 1) We are a professional manufacture of construction machine, have CE certification, with high quality and competitive price
- 2) Tower crane is a combination of advanced technologies from home and abroad, it is equipped with a hydraulic self-raising mechanism and frequency-converting slewing mechanism.
- 3) The crane has a complete set of safety devices, which can guarantee the safety and high efficient operation of the equipment, It is equipped with height limiter, moment limiter, radius-changing limiter and weight limiter, etc.
- 4) Our products have been exported to many countries and areas in Europe, America, Australia, the Middle East and Southeast Asia etc.

Specification

Foundation	Fixed angle or according to clients needs
Model	K500(7050) Tower Crane
Freestanding height	62 meters
Max. height	200 meters
Max. radius	70 meters
Jib end load	5.0 t
Max. load	20 t
Drum capacity	600 meters
Lifting speed	0-140 and 0-70 m/min
Slewing speed	0-0.57 r/min
Trolley speed	0-78 m/min
Power line voltage	380V/50Hz (60Hz) or others
Counter weight	Steel-structured frame (without concrete)
Mast section	2.45 x 2.45 x 5m (split type)

Features

Durable, safe and low-maintenance cranes live up to the highest manufacturing standards. They are durable, operator-friendly, safe and have low maintenance requirements.

Quality materials for durability

Our components are traceable back to original premium-quality manufacturers, ensuring that they can easily be replaced when necessary. The quality of our components assure good resistance to fractures under conditions of high loading and low temperatures.

Quality steel mill-certified to European EN standards.

High-quality components from suppliers represented worldwide.

Protected: For safeguarding, all components are fitted into housing of the highest quality. Fully enclosed motors - IP55 - ensure long lasting motor insulation.

Easily identifiable: Cables and components are numbered or marked for easy identification, reducing maintenance time and costs.

Efficient: Virtually all internal electrical installation is done using multi-plug connections which reduces erection time.

Safety devices:

- 1): Hoist height limit
- 2): Over speed limit
- 3): Over load limit
- 4): Lifting moment limit
- 5): Slewing angle limit
- 7): Obstruction light (tip of jib, tower head)
- 8): Wind lock device.

The process features

1) Automatic submerged arc welding is adopted in the main section limbs and chord boom. It has high thermal efficiency, high penetration, high production efficiency, while reducing the pores and crack defects, increases the weld strength and the beautiful appearance.

2) We adopt carbon dioxide gas welding; it has heat concentrated, a small welding line, high strength and resistance to rust and crack. it can reduce stress and deformation, it has high strength and resistance to rust and crack.

3) Shot blasting is used for masts to strength the hardness of steel surface; enhance the paint adhesion and prolonging its life

Pictures



Jinan Avitt International Trade Co., Ltd-HYCM Tower Crane



0086-18254159408



emma1109@foxmail.com



hycmtowercrane.com

No.218-1,Building 8, Comprehensive Building, Zone 8, Dongshan Garden, Shuangshan Street, Zhangqiu District, Jinan City, Shandong Province, China