



TC6515 Tower Crane Electric Power Cable 10T Load 65m Boom Length

Our Product Introduction

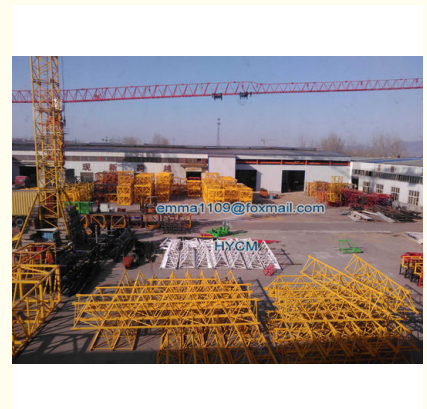
Basic Information

- Place of Origin: China
- Brand Name: HYCM
- Certification: CE, ISO, GOST, CU-TR
- Model Number: QTZ125(6515) Tower Crane
- Minimum Order Quantity: 1
- Price: \$103000-116900 per set
- Packaging Details: Naked packing, 6*40'HQ or 7*40'HQ containers.
- Delivery Time: 20 days after receiving the deposit or origin LC
- Payment Terms: TT, LC
- Supply Ability: 20 sets per month



Product Specification

- Condition: 100% New
- Application: Buildings And Projects
- Type: Fixed With Tower Head
- Max. Load: 10 T
- Jib Length: 65 M
- Tip. Load: 1.5 T
- Power supply: 380V/50Hz Or According To Client's Requirements
- Mast section: 1.835*1.835*2.5m Or 2*2*3m
- Electric Box: Schneider
- Power Supply: 380V/50Hz, 415V/50Hz, 220V/50Hz Or According To Clients Need



More Images



for more products please visit us on hycmtowercrane.com

Product Description

TC6515 Tower Crane Electric Power Cable 10T Load 65m Boom Length

Features

- 1) Working Radius (m): 65
- 2) Max. Load Capacity (T): 10
- 3) Tip Load (T): 1.5
- 4) Mast Section dimension (m): 1.835×1.835×2.5 or 2*2*3m
- 5) Hoisting Mechanism Speed (m/min): 0-100 0-50
- 6) Motor power (kw): 45kw
- 7) Slewing Mechanism Speed (r/min): 0-0.6
- 8) Motor power (kw): 5.5×2
- 9) Trolleying Mechanism Speed (m/min): 0-60
- 10) Motor power (kw): 5.5

Specification

Model	QTZ125 (6515) Tower Crane	
Working Radius (m)	65	
Max. Load Capacity (T)	10	
Tip Load (T)	1.5	
Free standing height (m)	50	
Max. Height with anchorages (m)	180	
Mast Section dimension (m)	1.835×1.835×2.5, two angle steel with rib 125×12mm	
Hoisting Mechanism	Speed (m/min)	0-100 0-50
	Motor power (kw)	45
Slewing Mechanism	Speed (r/min)	0-0.6
	Motor power (kw)	2*5.5
Trolleying Mechanism	Speed (m/min)	0-60
	Motor power (kw)	5.5
Jacking-up System	Speed (m/min)	0.4
	Motor power (kw)	5.5
Total Power (kw)	61.5	
Power Supply	380V/50Hz, 220V/60Hz or others	

Advantage

Automatic impeller blasting and spraying assembly line

Adopt the world first-class automatic spraying assembly line. The large structure parts are dealt with impeller blasting before spraying. That remove steel surface oxides and welding spatters effectively, eliminates the internal stress producing in welding process, increases the parts' anti-figure strength and steel surface hardness, increases painting adhesion and prolong the service life of the product maximizes efficiency and saves energy.

Strict quality examination

The strict quality test, raw material test, test of welding, checking welding quality of appearance, assembly and adjustment of jib, tower head and pivot in factory.

We have professional packing person to pack and put the tower crane in the container or on to the truck.

Components

Mast: the main supporting tower of the crane. It is made of steel trussed sections that are connected together during installation.

Slewing unit: the slewing unit sits at the top of the mast. This is the engine that enables the crane to rotate.

Operating cabin: the operating cabin sits just above the slewing unit. It contains the operating controls.

Jib: the jib, or operating arm, extends horizontally from the crane. A "luffing" jib is able to move up and down; a fixed jib has a rolling trolley that runs along the underside to move goods horizontally.

Pictures



Jinan Avitt International Trade Co., Ltd-HYCM Tower Crane



0086-18254159408



emma1109@foxmail.com



hycmtowercrane.com

No.218-1, Building 8, Comprehensive Building, Zone 8, Dongshan Garden, Shuangshan Street, Zhangqiu District, Jinan City, Shandong Province, China