



## 8tons Luffing Crane Tower D120(4522) Jib Towercrane For High Buildings

### Our Product Introduction

#### Basic Information

- Place of Origin: China
- Brand Name: HYCM
- Certification: CE, ISO, GOST, CU-TR
- Model Number: QTD120(4522) Luffing Tower Crane
- Minimum Order Quantity: 1 set
- Price: \$104700-111500 per set
- Packaging Details: Naked packing, 6\*40'HQ containers.
- Delivery Time: 30 days after receiving the deposit or origin LC
- Payment Terms: TT, LC
- Supply Ability: 10 sets per month

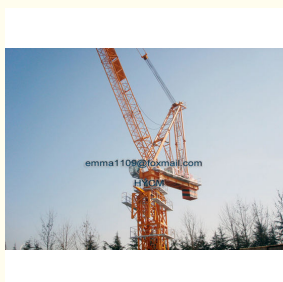


#### Product Specification

- Application: Buildings And Projects
- Type: Fixed With Tower Head
- Max. Load: 6 T
- Jib Length: 45 M
- Tip. Load: 2.2 T
- Power supply: 380V/50Hz Or According To Client's Requirements
- Mast section: 1.6\*1.6\*3 M (split Type)
- Main Chord: 180\*18 Mm (angle Steel)



#### More Images



## Product Description

### 8tons Luffing Crane Tower D120(4522) Jib Towercrane For High Buildings

**Performance parameters of D4522: performance parameters and technical indexes reach both domestic and international advanced level.**

- Max. jib length: 45m;
- Max. lifting capacity 8t;
- Max. hoisting capacity at jib tip:2.2t;
- Rated lifting moment: 1200 Kn.m;
- Max. freestanding height: 27m; Max. working height of anchored crane: 160m;

#### Specification

Model	QTD120 (4522) Luffing Tower Crane	
Working Radius (m)	45	
Max. Load Capacity (T)	8	
Tip Load (T)	2.2	
Free standing height (m)	37	
Max. Height with anchorages (m)	160	
Mast Section dimension (m)	1.6×1.6×3, angle steel 180×18mm	
Hoisting Mechanism	Speed (m/min)	80/40/8.5 40/20/4.25
	Motor power (kw)	24/24/5.4
Slewing Mechanism	Speed (r/min)	0.6
	Motor power (kw)	2*3.7
Trolleying Mechanism	Speed (m/min)	10
	Motor power (kw)	30
Jacking-up System	Speed (m/min)	0.4
	Motor power (kw)	7.5
Total Power (kw)	34	
Power Supply	380V/50Hz or according to clients needs	

#### Other important advantages

- 1) Fast, simple and safe erection of small, light individual modules.
- 2) Excellent choice for narrow sites in the city as the working jib/boom is luffing type.
- 3) Stable function of Frequency Inverters and other electrical control systems for main mechanism, and easy and convenient self repair and maintenance for the clients.
- 4) Ball blasting and several painting for steel structure surface of tower cranes, the hot-dip galvanizing process is used on the handrails, and the time limit of the galvanized quality assurance longer years.
- 5) Good at endurance, adapting to atrocious weather like higher of lower temperature, acid rain and typhoon.

#### Commercial Terms

Price: Negotiable

Delivery time: 15-30 days after receiving 30% advanced payment

Trade terms: FOB (qingdao)

Terms of Payment: T/T or L/C (30% advanced payment, 70% before shipment)

Packing: Standard Exporting Packing

Warranty: At least 12 months

#### Photos



**Jinan Avitt International Trade Co., Ltd-HYCM Tower Crane**



0086-18254159408



emma1109@foxmail.com



hycmtowercrane.com

No.218-1,Building 8, Comprehensive Building, Zone 8, Dongshan Garden, Shuangshan Street, Zhangqiu District, Jinan City, Shandong Province, China