



D500 Large Luffing Tower Crane 5078 50m With 25 Tons Max.Load

Our Product Introduction

for more products please visit us on hycmtowercrane.com

Basic Information

- Place of Origin: China
- Brand Name: HYCM
- Certification: CE, ISO, GOST, CU-TR
- Model Number: QTD500(5078) Luffing Tower Crane
- Minimum Order Quantity: 1 set
- Price: \$308400-320000 per set
- Packaging Details: Naked packing, 11*40'HQ containers.
- Delivery Time: 30 days after receiving the deposit or origin LC
- Payment Terms: TT, LC
- Supply Ability: 5 sets per month

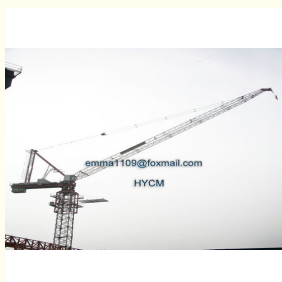


Product Specification

- Application: Buildings And Projects
- Type: Fixed With Tower Head
- Max. Load: 25 T
- Jib Length: 50 M
- Tip. Load: 7.8 T
- Power supply: 380V/50Hz Or According To Client's Requirements
- Mast section: 2.5*2.5*6 M (split Type)
- Main Chord: H Steel 293*266 Mm



More Images



Product Description

D500 Large Luffing Tower Crane 5078 50m With 25 Tons Max.Load

Main Technical Parameters of D500 large Luffing Tower Crane

- 1) Nominal Lifting Moment: 5000KN.m
- 2) Working Range: 3-50m
- 3) Max. Lifting Capacity: 25t
- 4) Independent Standing Height: 55m
- 5) Attached Standard Height: 260m
- 6) Lifting Speed: (a=2) 0-100; (a=4) 0-50 m/min
- 7) Slewing Speed: 0-0.57r/min
- 8) Trolleying Speed: 0-10m/min

Specification of D500 large Luffing Tower Crane

Model	QTD500 (5078) Luffing Jib Tower Crane	
Working Radius (m)	50	
Max. Load Capacity (T)	25	
Tip Load (T)	7.8	
Freestanding height (m)	55	
Max. Height with anchorages (m)	260	
Mast Section dimension (m)	2.5×2.5×6, H steel 293×266mm	
Hoisting Mechanism	Speed (m/min)	(a=2) 0-100; (a=4) 0-50
	Motor power (kw)	90
Slewing Mechanism	Speed (r/min)	0-0.57
	Motor power (kw)	2*9
Trolleying Mechanism	Speed (m/min)	0-10
	Motor power (kw)	75
Jacking-up System	Speed (m/min)	0.4
	Motor power (kw)	15
Total Power (kw)		183
Power Supply		380V/50Hz or according to clients needs

Service of D500 large Luffing Tower Crane

- a. Rapid response to any inquiry(within 3 hours) and 24 hours on line service.
- b. Competitive price which directly work with factory. Welcome to visit us at your convenient time.
- c. Professional inspection department to guarantee quality and install & commission before shipment.
- d. Engineers will go to construction site for guiding the installation and test if you need.
- e. One sets of easy worn Spare parts is free supplied along with the tower crane.
- f. Warranty: 12 months super long time guarantee period.

Photos of D500 large Luffing Tower Crane



Jinan Avitt International Trade Co., Ltd-HYCM Tower Crane



0086-18254159408



emma1109@foxmail.com



hycmtowercrane.com

No.218-1,Building 8, Comprehensive Building, Zone 8, Dongshan Garden, Shuangshan Street, Zhangqiu
District, Jinan City, Shandong Province, China