



10t Load 60m Boom Hammerhead Tower Crane Split L68 Mast Sections

Our Product Introduction

for more products please visit us on hycmtowercrane.com

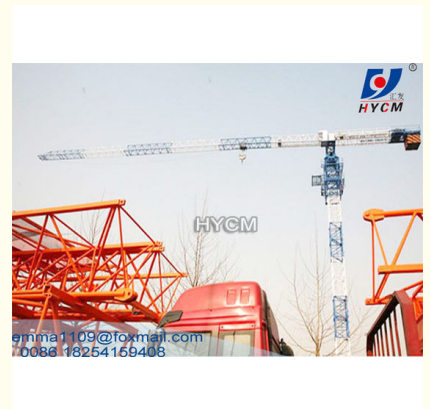
Basic Information

- Place of Origin: China
- Brand Name: HYCM TOWER CRANE
- Certification: CE, ISO, GOST, CU-TR
- Model Number: PT6019 Tower Crane
- Minimum Order Quantity: 1
- Price: \$101000-126600 per set
- Packaging Details: Naked packing, 7*40'HC Containers for freestanding height tower crane
- Delivery Time: 30 days after receiving the deposit or origin LC at sight
- Payment Terms: TT, LC
- Supply Ability: 10 sets per month



Product Specification

- Application: Buildings And Projects
- Type: Fixed Without Tower Head
- Load: 10t
- Bomm: 60m
- Tip. Load: 1.9t
- Power supply: 380V/50Hz Or According To Client's Requirements
- Mast section: L68 2*2*3m
- Main Chord: 200*20mm



More Images



Product Description

10t Load 60m Boom Hammerhead Tower Crane Split L68 Mast Sections

Short Parameter

1. QTZ125(PT6019) Flat Top Tower Crane
2. Type: fixed and external climbing
3. jib length: 60m
4. tip load: 1.9t
5. max. load: 10t
6. freestanding height: 50m-60m

Characteristics

This Topless Tower Crane is one of the new category of HYCM company, which is designed and manufactured based on 21 years' experience on topkit tower crane

This kind of tower crane absorbs many advanced technologies from home and abroad;

The standard mast absorbs Potain technology, which can be transported easily and convenient;

The structure is designed reasonable and compact, with better mechanical performance and slinky outline.

The crane has complete set of safety devices, which can guarantee the safe and high efficient operation of the equipment. The machine is equipped with lifting height limiter, dolly range-change limiter, moment limiter, weight limiter and circumgyrating limiter, etc

Specification

Model	QTZ125(PT6019) Topless Tower Crane	
Working Radius (m)	60	
Max. Load Capacity (T)	10	
Tip Load (T)	1.9	
Free standing height (m)	50	
Max. Height with anchorages (m)	200	
Mast Section dimension (m)	2×2×3, angle steel 200×20mm L68	
Hoisting Mechanism	Speed (m/min)	(a=2)0-100; (a=4)0-50
	Motor power (kw)	45
Slewing Mechanism	Speed (r/min)	0-0.6
	Motor power (kw)	2×5.5
Trolleying Mechanism	Speed (m/min)	0-60
	Motor power (kw)	5.5
Jacking-up System	Speed (m/min)	0.4
	Motor power (kw)	7.5
Total Power (kw)	61.5	

Advantages

Three Mechanism: Hoisting mechanism, Slewing mechanism, Trolleying mechanism are fully controlled by VFD (variable frequency device) which has realized the stepless speed regulation and greatly improves the reliability.

Control System

The PLC allows for automatic detection of electrical fault and issues corresponding sound and light alarm. Critical components are all procured from international famous enterprises.

Safety Protection Device

Our tower crane is equipped with many advanced or ingenious components apart from regular safety devices used in ordinary cranes for the purpose of enhancing its security and operating convenience.

Structure

Thanks to the advanced design tools, such as electro-mechanical design, CAD design, optimization design, and modular design, the tower crane proves to be a kind of optimum construction equipment that shows not only superb strength, stiffness and fatigue resistance but also outstanding comprehensive performance and reliability.

Safety Device

1. 3 obstacle lights
2. Height limiter
3. Slewing limiter
4. Range/ trolley limiter
5. Weight limiter
6. Moment limiter
7. Anemometer and block box(optional)

Photos



Jinan Avitt International Trade Co., Ltd-HYCM Tower Crane



0086-18254159408



emma1109@foxmail.com



hycmtowercrane.com

No.218-1, Building 8, Comprehensive Building, Zone 8, Dongshan Garden, Shuangshan Street, Zhangqiu District, Jinan City, Shandong Province, China