



70m Trolley Jib Flat Top Tower Crane 12 ton L68 Mast Section All Inverter Control

Our Product Introduction

for more products please visit us on hycmtowercrane.com

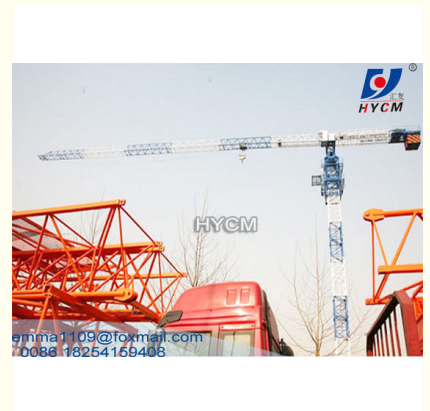
Basic Information

- Place of Origin: China
- Brand Name: HYCM TOWER CRANE
- Certification: CE, ISO, GOST, CU-TR
- Model Number: PT7025 Headless Tower Crane
- Minimum Order Quantity: 1
- Price: \$153900-172600 per set
- Packaging Details: Naked packing, 9*40 HC containers for Headless tower crane
- Delivery Time: 30 days after receiving the deposit or origin LC
- Payment Terms: TT, LC
- Supply Ability: 5 sets per month



Product Specification

- Condition: 100% New
- Application: Buildings And Projects
- Type: Fixed With Tower Head
- Max. Load: 12 T
- Jib Length: 70 M
- Tip. Load: 2.5 T
- Mast section: 2*2*3 M (Potain Type)
- Electric Box: Schneider Contactors
- Power Supply: 380V/50Hz, 415V/50Hz, 220V/50Hz Or According To Clients Need
- Control Type: Inverter Or VFD



More Images



Product Description

70m Trolley Jib Flat Top Tower Crane 12 ton L68 Mast Section All Inverter Control

Performance

- Max. jib length: 70m;
- Max. lifting capacity 12t;
- Max. hoisting capacity at jib tip: 2.5t;
- Rated lifting moment: 2500 Kn.m;
- Max. freestanding height: 60m; Max. working height of anchored crane: 180m;

Specification

Rated Lifting Moment (KN.M)	2500
Rated Loading Capacity (t)	12
Max. Lifting Load (t)	12
Span (m)	70
Working range (m)	3 to 70
Tip Load (t)	2.5
Max. Lifting Height (m)	180
Free standing height (m)	50-60
Rope length (m)	500
Slewing speed (r/min)	0-0.6
Trolley speed (m/min)	0-60
Jacking-up speed (m/min)	0.4
Power supply	380V/50Hz or according to client's requirements
Power Capacity (kw)	61.5
Electric switch box	Schneider contactors
Main Material (mm)	200*20 / angle steel
Mast section (m)	2*2*3 (split type)

The eight advantages

1. reduce the dismantling requirements, lower weight, low mounting height, dismount each mast at a time in the air, save the labor cost, safety and fast.
2. it is suitable for crossover work of the cranes, without the tower cap and pull rod, the safety will be increased when there need the crossover work.
3. It is suitable for the special requirement about the height, such as airport nearby, tunnel, workshop, and the construction site with high-tension cable.
4. It is suitable for the construction site that has the requirement about the crane boom, it can be used as internal climbing crane in the high-rise buildings, irregular roof or small areas.
5. It is very convenient for dismantling in the restricted construction site, dismount each crane boom at a time by manual.
6. The steel structure of crane boom has long using life and high safety standard.
7. The crane boom is good applicability, high-usage, the design of the topless tower crane boom is easy for realizing the serialization and standardization. Reduce the design and making cost.
8. Low design cost, short cycle, can much better satisfy the multiple demands of the customers.

Advantage of Fixed Tower Crane

1. 15 years of experience in supplying new tower cranes.
2. Export to more than 20 countries with CE/ISO/GOST/CU-TR Certificates.
3. Mobile and internal climbing type tower cranes are also available.
4. Impeller blasting and rust protection painting with advanced painting process.
5. Strict and experience welding line
6. New designed mast, can be used to Internal and external climbing tower crane
7. Well known brand mechanism system, Schneider Electronic control system, Jjiangte or Jiuhe motor
8. Engineers available to service machinery overseas.
9. For warranty: 12 months from the B/L date.

Why choose us

1. A professional tower crane supplier in China with 15 years experience
2. Exported to more than 20 countries with ISO9001 & CE & GOST Certifications
3. Hydraulic self-climbing mechanism
4. Variable-frequency slewing mechanism
5. Variable-speed frequency PLC control System
6. Operation data display screen and Safety monitoring system (Black Box)
7. Various safety devices

Pictures



Jinan Avitt International Trade Co., Ltd-HYCM Tower Crane



0086-18254159408



emma1109@foxmail.com



hycmtowercrane.com

No.218-1, Building 8, Comprehensive Building, Zone 8, Dongshan Garden, Shuangshan Street, Zhangqiu District, Jinan City, Shandong Province, China