



QD3023 Luffing Jib Derrck Crane 8tons Max.Load 2.3tons at 30meters Arm

Our Product Introduction

for more products please visit us on hycmtowercrane.com

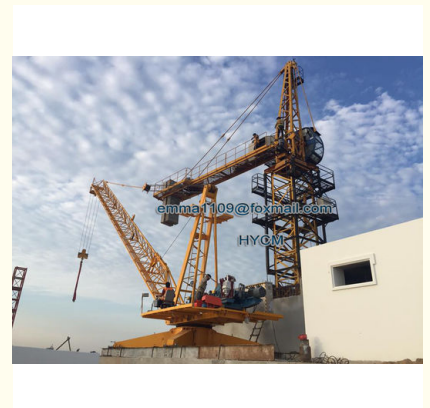
Basic Information

- Place of Origin: China
- Brand Name: HYCM
- Certification: CE, ISO
- Model Number: QD3023 Derrick Crane
- Minimum Order Quantity: 1 set
- Price: \$47500-52200 per set
- Packaging Details: Naked packing, 1*40'HQ containers.
- Delivery Time: 30 days after receiving the deposit or origin LC
- Payment Terms: Western Union, L/C, T/T
- Supply Ability: 10 sets per month



Product Specification

- Condition: 100% New
- Application: Disassembly Inner Tower Crane
- Type: Fixed With Tower Head
- Max.Load: 8tons
- Arm: 30meters
- Height: 150m
- Power: 380v/50hz
- Color: Yellow Or According To Clients Need



More Images



Product Description

QD3023 Luffing Jib Derrick Crane 8tons Max.Load 2.3tons at 30meters Arm

Short Parameters

- 1.QD80(3023) Derrick Tower Crane
2. Type: fixed
3. jib length: 30m
4. tip load: 2.3t
5. max.laod: 8t
- 6.height:150m or others according to clients needs

Specification

QD3023 Derrick Crane Specification	
Rated Lifting Moment	800KN.m
Rated Loading Capacity	8t
Max. Lifting Load	8t
Tip Load	2.3t
Max. Lifting Height	150m
Jib length / Span	30m
Working range	3 to 30m
Slewing speed	0-0.6r/min
Trolleying speed	0-10 m/min
Luffing speed	0-80 0-40 m/min
Power supply	380V/50Hz or others
Electric switch box	Schneider
Slewing bearing model	1250.45

Description of Derrick Crane

The derrick crane was conceived as a specialist disassemble crane for stripping down cranes on tall buildings, bridge pylons and telecommunication towers.

The dimensions and weights of all individual parts on the new crane are therefore designed to enable them to be dismantled with the aid of a very small hoist and removed via lift shafts in buildings.

Feature

- (1) Reasonable structure for less costing and maintenance.
- (2) Favorable performance to improve your working capacity.
- (3) Smooth starting and stopping to improve you security sense.
- (4) Low noise, commodious cabin and good view can make you happiness operating and accurate operating.
- (5) Credible electric parts to guarantee the crane safety in operating.

Safety device

- (1) Weight overload protection device
- (2) Lifting height limit device
- (3) Voltage lower protection function
- (4) Phase sequence protection function
- (5) Emergency stop function

Our Service

-----Quality Assurance

Good quality is assured by advanced manufacturing technology. And all products will be checked by our quality-control manager.

-----Excellent Package

We provide standard, strong, protective package for our products to prevent it from outer damage.

-----Warranty Assurance

For our tower crane, we provide 1 year warranty period and quick replace service.

-----The Fastest Reply

Detailed information,specific model and price of products will be provided quickly after receiving inquiry.

Introduction

1. The Derrick cranes is fixed to the roof.
2. The base is then attached to the slewing unit that allows the crane to sewing.
3. On top of the slewing unit there are two main parts which are: the long jib, shorter counter-jib,
4. The long jib is the part of the crane that carries the load.
5. The crane operator either sits in a cab at the top of the tower or controls the crane by radio remote control from the ground.
6. The lifting hook is operated by the crane operator using electric motors to manipulate wire rope cables through a system of sheaves.

Why chose US

Good Quality: Gotten certification of ISO

Best price: Best offer with suitable payment terms.

Good Sale Service: Technician provided to assistant installment, ect.(Buyer bear the fee).

Delivery on Time: Report order progress. Make sure Delivery on time.

Warranty: Provide a warranty of 12 months from the bill date.

Photos



Jinan Avitt International Trade Co., Ltd-HYCM Tower Crane



0086-18254159408



emma1109@foxmail.com



hycmtowercrane.com

No.218-1,Building 8, Comprehensive Building, Zone 8, Dongshan Garden, Shuangshan Street, Zhangqiu District, Jinan City, Shandong Province, China