



100-200m Working Height ZLP800 Suspension Platform 800kg Load FOR or CIF Price

Our Product Introduction

for more products please visit us on hycmtowercrane.com

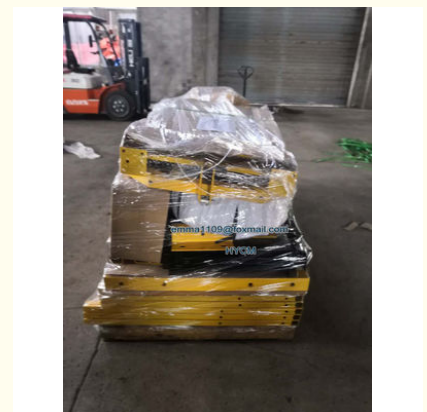
Basic Information

- Place of Origin: China
- Brand Name: HYCM or others
- Certification: ISO, CE
- Model Number: ZLP800 Platform
- Minimum Order Quantity: 1 set
- Price: \$2800-3690 per set
- Packaging Details: Pallet per set. LCL or 20'GP, 40'HQ construction
- Delivery Time: 7-10 days
- Payment Terms: Western Union, L/C, T/T
- Supply Ability: 50 sets per month



Product Specification

- Condition: 100% New
- For: Load Passengers To Work
- Type: Electric Scaffolding
- Load: 800kg
- Working Height: 100-200m
- Rated Speed: 8-10 M/min
- Power: 380v /50Hz Or Others
- Motor Power: 2*1.8 Kw
- Wire Rope: 8.6mm
- Platform Length: 7.5m



More Images



Product Description

100-200m Working Height ZLP800 Suspension Platform 800kg Load FOR or CIF Price

Introduction:

1m, 2m, 3m, 1.5m, 2.5m to the length made.
 In any Combination Rated Load: 800KG
 Rated Lifting Speed: 8-10m/min
 Length of Platform: 7500mm or others
 Surface Proceeding: Steel materials(Galvanized,Spraying) or Aluminum
 Lifting Height: 100-200m
 Cable: 100-200m
 Max Lifting Height:100-200m
 Steel Rope: 8.6mm or 9.1mm
 Hoist Power: 1.8KW*2
 Voltage:380V, 50HZ, Three-Phase(standard), 440V/60HZ, 220V/60Hz or others.
 Safety Lock Permission Force of Impact: 30KN
 Locking Cable Angle: 3°~ 8°
 Suspension Mechanism Front Beam Overhang: 1.3 ~ 1.5m ±0.26
 Support Adjustable Height: 1.44 ~ 2.14m ±0.26
 Counter Weight: 1000KG or others
 Package: Pallet or Naked by Containers

Applications

1. Cleaning and maintaining of the exterior wall of high-rise building.
2. Painting, decoration and refurbishing of exterior walls.
3. Installation projects and other construction working of outer walls of high-rise building.
4. Aerial working of ship, large tower, bridge, dams and large chimneys.
5. Install and maintain for high-rise building elevator hoistway, shipbuilding industry, seagoing vessel, warships welding maintain.

Specification

Model	ZLP800 Suspended Working Platform	
Rated load(kg)	800	
Lifting speed(m/min)	8-10	
Motor power(kw)	2×1.8 50HZ/60HZ	
Brake torque(Km)	15.2	
Steel rope angle adjusting range(°)	3°- 8°	
Distance between two steel rope(mm)	≤100	
Rated stretch of front beam(mm)	1100-1700	
Suspending Platform	Locking	Steel
	Nr. of platform rack	Single rack
	Nr. of platform	3
	L×W×H(mm)	(2500×3)×690×1180
	Weight(kg)	217
Suspending mechanism(kg)	2×175 Kg	
Counterweight(kg) optional	25×40pcs	
Diameter of steel rope(mm)	8.6	
Voltage(v) 3PHASES	220V/380V/415V (customized)	

Features

1. Our suspended working platform can be widely used parapet and complicated building in different height. And we can also supply customized platform to meet different requirements from customers.
2. Suspension power Working Platform is a temporary, flexible high access equipment for maintenance and construction work. distinguished from permanent access equipment. It can be disassembled conveniently.
3. It compared with traditional scaffolding, can save labours and time to maintain the high buildings, such as industry workshop, water tower, bridge, TV tower, big chimney, cenotaph, dam, etc.
4. Besides, Suspension Working Platform can be used to lift specific weight.
5. Suspension Working Platform is a good helper for construction and decoration of high buildings.
6. ZLP800 suspended platform uses LTD80 hoisting motor. It has electromagnetic brake motor, centrifugal speed limiting device, two steep speed reducer and "a" type rope winding system.
7. Hoisting motor can wind rope automatically. Operator only need to insert rope into the motor.



More products available:

Tower Cranes

- QTZ Topkit/Hammer Head Tower Cranes: Working jib from 30-75m and max.load from 4-25t.
- PT Topless/Flat Top Tower Cranes: Working jib from 30-80m and max.load from 4-32t.
- D Luffing Tower Crane: Working jib from 25-60m and max.load from 3-25t.
- QD Derrick Crane: load from 3t to 25t for disassemble inner climbing tower cranes.

SC Construction Man and Material Elevator

- Rack and pinion elevator, special for the lifting work of construction Man and Material, 1000kg to 4000kg capacity, Passenger and Material, up to 200m. .

SS Building Material Lift / Hoist

----- Wire rope lift, special material lifting work in construction site, 1000kg to 2000kg capacity, no passenger, up to 60m.

SJY Scissor Lift



Jinan Avitt International Trade Co., Ltd-HYCM Tower Crane



0086-18254159408



emma1109@foxmail.com



hycmtowercrane.com

No.218-1, Building 8, Comprehensive Building, Zone 8, Dongshan Garden, Shuangshan Street, Zhangqiu District, Jinan City, Shandong Province, China