



TC5015 Tower Crane Hammerhead type Jib length 50 meters Tip load 1.5 tons

Our Product Introduction

for more products please visit us on hycmtowercrane.com

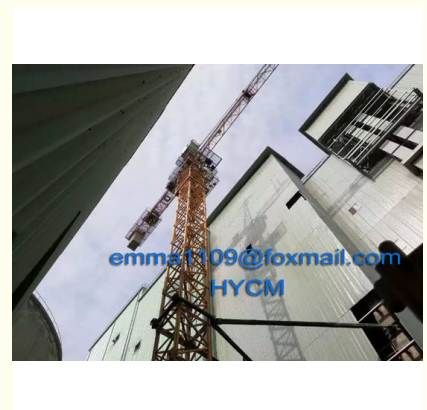
Basic Information

- Place of Origin: China
- Brand Name: HYCM TOWER CRANE
- Certification: CE, ISO, GOST, CU-TR
- Model Number: TC5015 Tower Crane
- Minimum Order Quantity: 1
- Price: \$67500-71600 per set
- Packaging Details: Naked packing, 6*40'HQ containers.
- Delivery Time: 20 days after receiving the deposit or origin LC
- Payment Terms: TT, LC
- Supply Ability: 40 sets per month



Product Specification

- Condition: 100% New
- Application: Buildings And Projects
- Type: Hammerhead
- Max. Load: 8t
- Jib Length: 50 Meters
- Tip Load: 1.5 Tons
- Power supply: 380V/50Hz Or Others
- Mast section: 1.835*1.8335*2.5 M (block Type)
- Electric Box: Schneider
- Free Height: 45m



More Images



Product Description

TC5015 Tower Crane Hammerhead type Jib length 50 meters Tip load 1.5 tons

Short Parameter

- 1.QTZ80(TC5015) Topkit Tower Crane
2. Type: fixed and external climbing
3. jib length:50m
4. tip load:1.5t
5. max.laod: 8t
- 6.freestanding height:45m

Description

1. The Fixed Tower crane base fixed to the ground on a concrete foundation
2. The base is then attached to the mast sections which gives the crane its height.
3. Further the mast is attached to the slewing unit that allows the crane to slewing.
4. The horizontal jib (working arm) is the part of the crane that carries the load.
5. The counter-jib carries a counterweight while the jib suspends the load to and from the center of the crane.
6. The crane operator usually stay in the cabin at the top of the tower.
7. The lifting hook is operated by the operator using electric motors to manipulate wire rope cables through a system of sheaves which lift the building materials

Specification

Foundation	fixed or mobile
Freestanding height	45 meters
Max. height	150 meters
Max. radius	50 meters
Jib end load	1.5 t
Max. load	8 T
Drum capacity	400 meters
Lifting speed	2r=80/40/8.5 4r=40/20/4.25 m/min
Slewing speed	0.6 r/min
Trolley speed	40/20 m/min
Power line voltage	380V/50Hz (60Hz)
Counter weight	Steel-structured frame (without concrete)
Mast section	1.835 x 1.835 x 2.5 m (135*12 square steel)

The process features

- 1) Automatic submerged arc welding is adopted in the main section limbs and chord boom. It has high thermal efficiency, high penetration, high production efficiency, while reducing the pores and crack defects, increases the weld strength and the beautiful appearance.
- 2) We adopt carbon dioxide gas welding; it has heat concentrated, a small welding line, high strength and resistance to rust and crack. it can reduce tress and deformation, it has high strength and resistance to rust and crack.
- 3) Shot blasting is used for masts to strength the hardness of steel surface; enhance the paint adhesion and prolonging its life

Why choose us

1. A professional tower crane supplier in China with 16 years experience
2. Exported to more than 20 countries with ISO9001 & CE, GOST, EAC Certifications
3. Hydraulic self-climbing mechanism
4. Variable-frequency slewing mechanism
5. Variabe-speed frequency PLC control System
6. Operation data display screen and Safety monitoring system (Black Box)
7. With full safety devices to keep workers safety (safety first)

Competitive Advantage

1. Focusing on tower crane exporting for 15 years;
2. Preferential ex-factory price, excellent product quality and good after-sales service are our pursuit;
3. Our tower cranes had exported to more than 20 countries, such as Vietnam, Philippines, Indonesia, India, Sri Lanka, Cambodia, Russia, Kazakhstan, Brazil, Cyprus, Belgium, Madagascar and Algeria etc.
4. Factory visit is welcomed.
5. If you need, engineers will go to the construction site for guiding the installation and test-running.
6. Easy-worn Spare parts are free supplied along with the tower crane.
7. 12 months super long time guarantee period.

If any question about tower crane, please do not hesitate to contact us.

Pictures





Jinan Avitt International Trade Co., Ltd-HYCM Tower Crane



0086-18254159408



emma1109@foxmail.com



hycmtowercrane.com

No.218-1,Building 8, Comprehensive Building, Zone 8, Dongshan Garden, Shuangshan Street, Zhangqiu District, Jinan City, Shandong Province, China