



Mini 6m Boom Inner Climbing Tower Crain 1.0tons Load CFR to Brazil

Our Product Introduction

for more products please visit us on hycmtowercrane.com

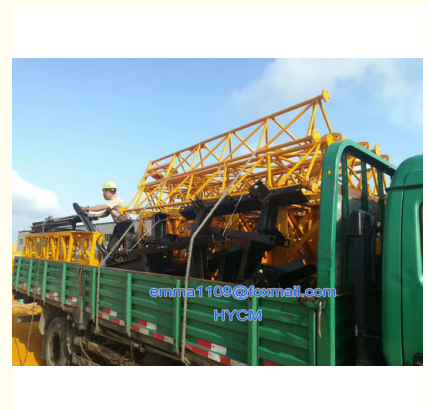
Basic Information

- Place of Origin: China
- Brand Name: HYCM
- Certification: CE, ISO
- Model Number: QT10 Inner climbing Tower Crane
- Minimum Order Quantity: 1 set
- Price: \$8500-10100 per set
- Packaging Details: Naked packing, 40'GP or 40'HQ containers.
- Delivery Time: 20 days after receiving the deposit
- Payment Terms: Western Union, L/C, T/T
- Supply Ability: 30 sets per month



Product Specification

- Condition: 100% New
- Application: Buildings And Projects
- Type: Inner Climbing
- Load: 1.0tons
- Jib: 6m
- Height: 10m
- Power: 380V/60Hz, 380V/50Hz Or Others
- Mast section: 0.55*0.55*1.25m
- After Sale Service: Engineers Available To Service Overseas



More Images



Product Description

Mini 6m Boom Inner Climbing Tower Crain 1.0tons Load CFR to Brazil

Short Parameters

1. Model: QT10 Inner Climbing Tower Crane
2. Type: fixed and inner climbing
3. Jib length: 6m
4. Load: 1t
5. Mast Section height: 10m

Specification of Small Internal Climbing Tower Crane

Rated Lifting Moment	10KN.M
Rated Loading Capacity	1t
Mast section height	10m
Max. Lifting Height	60m
Span	6m
Hoisting speed	40/20 m/min
Slewing speed	0-0.55 r/min
Power supply	380V/50Hz or others
Power Capacity	5Kw
Electric switch box	Schneider
Mast Section	0.55*0.55*1.25m

Description of Small Internal Climbing Tower Crane

1. QT10 tower crane belong to upper-swing hydraulic inner climbing tower crane with horizontal jib.
2. All kinds of performance parameters and technical items are up to or better than the National Standard.
3. The max radius is 6m. Independent loading-lifting height is 10m. Max. climbing loading-lifting height is 60m. The rated load moment is 10KN.m.

Our Service

If the buyer needs help in the period of fixing, the seller will send one technician to the buyer's place to guide the installation until the crane installation is completed, but no more than 15 working days. The buyer is in charge of the visa, round-trip tickets, accommodation.

The buyer shall pay 50-80 US dollars every day to the technician as allowance.

The seller is not responsible for the maintenance of the vulnerable components, but can supply **free** replacement together with the crane.

If the buyer operates the products confirming to the requirements in the service manual, non-vulnerable parts accrues problem found the manufactory will help buyer mend or change the broken accessories within one year.

The seller is not responsible for any accident or damage to the tower crane caused by user's failure to do regular maintenance or to follow the safety procedures provided in Manual.

We promise that any of your inquiry will be respond in 24 hours!

Produce process of Small Internal Climbing Tower Crane

Raw Material - Cutting - Welding - Shot Blasting - Assembling - Painting

More Photos of Small Internal Climbing Tower Crane



More products available

Tower Cranes

---- QTZ Topkit/Hammer Head Tower Cranes: Working jib from 30-75m and max.load from 4-25t.

---- PT Topless/Flat Top Tower Cranes: Working jib from 30-80m and max.load from 4-32t.

---D Luffing Tower Crane: Working jib from 25-60m and max.load from 3-25t.

---QD Derrick Crane: load from 3t to 25t for disassemble inner climbing tower cranes.

SC Construction Man and Material Elevator

----- Rack and pinion elevator, special for the lifting work of construction Man and Material, 1000kg to 4000kg capacity, Passenger and Material, up to 200m. .

SS Building Material Lift / Hoist

----- Wire rope lift, special material lifting work in construction site, 1000kg to 2000kg capacity, no passenger, up to 60m.

Working Platform

---ZLP Suspended Platforms and Scissor Lift Platforms

□□□



Jinan Avitt International Trade Co., Ltd-HYCM Tower Crane



0086-18254159408



emma1109@foxmail.com



hycmtowercrane.com

No.218-1,Building 8, Comprehensive Building, Zone 8, Dongshan Garden, Shuangshan Street, Zhangqiu District, Jinan City, Shandong Province, China