

16ton TC7525 Topkit Tower Crane For High-rise Buildings Construction Site

Our Product Introduction

for more products please visit us on hycmtowercrane.com

Basic Information

- Place of Origin: China
- Brand Name: HYCM TOWER CRANE
- Certification: CE, ISO, GOST, CU-TR
- Model Number: TC7532 Topkit Tower Crane
- Minimum Order Quantity: 1
- Price: \$181200-263000 per set
- Packaging Details: Naked packing, 9*40'HQ containers.
- Delivery Time: 25-30 days after receiving the deposit or origin LC
- Payment Terms: TT, LC
- Supply Ability: 5 sets per month



Product Specification

- Condition: 100% New
- Application: High-rise Buildings Construction Site
- Type: Fixed And External Climbing
- Max. Load: 16ton
- Jib: 75m
- Working Height: 48m
- Mast section: 2*2*3 M (split Type) Potain Type
- Electric Box: Schneider
- Power Supply: 380V/50Hz, 415V/50Hz, 220V/50Hz Or According To Clients Need
- Color: Yellow, Red Or According To Clients Needs



More Images



Product Description

16ton TC7525 Topkit Tower Crane For High-rise Buildings Construction Site

Short Parameter

- 1.TC7525 Topkit Tower Crane
2. Type: fixed and external climbing
3. jib length: 75m
4. tip load:2.5t
5. max.laod:16t
- 6.freestanding height:48m

Description

1. This series tower crane is characterized by horizontal jib frame, trolley travel, slewing self-climbing, novel structure and reliable running.
2. All accessories are adopted from home famous brands and electrical components from international famous brands.
3. "Quality First" is not just a slogan, which has already deeply rooted in HYCM People's soul, besides we will also make all your purchases in unlimited satisfaction with star-rated after-sales services.

Specification

| | |
|------------------------|--------------------------------|
| Rated Lifting Moment | 2500KN.m |
| Rated Loading Capacity | 16t |
| Max. Lifting Load | 16t |
| Tip Load | 2.5t |
| Max. Lifting Height | 183m |
| Jib length / Span | 75m |
| Free standing height | 48m |
| Rope length | 550m |
| Working range | 3 to 75m |
| Slewing speed | 0-0.7r/min |
| Trolleying speed | 0-65 m/min |
| Jacking-up speed | 0.4m/min |
| Counter jib length | 19m |
| Topkit Height | 10m |
| Power supply | 380V/50Hz or others |
| Power Capacity | 77.5Kw |
| Electric switch box | Schneider |
| Hoisting speed | (a=2)0-63, (a=4)0-31.5 |
| Mast section | 2.0*2.0*3.0m (split structure) |
| Main material | 200*20mm/angle steel/Q345B |

The process features

- 1): Automatic submerged arc welding is adopted in the main section limbs and chord boom. It has high thermal efficiency, high penetration, high production efficiency, while reducing the pores and crack defects, increases the weld strength and the beautiful appearance.
- 2): We adopt carbon dioxide gas welding; it has heat concentrated, a small welding line, high strength and resistance to rust and crack. it can reduce tress and deformation, it has high strength and resistance to rust and crack.
- 3): Shot blasting is used for masts to strength the hardness of steel surface; enhance the paint adhesion and prolonging its life

Our Service

-----Quality Assurance

Good quality is assured by advanced manufacturing technology. And all products will be checked by our quality-control manager.

-----Excellent Package

We provide standard, strong, protective package for our products to prevent it from outer damage.

-----Warranty Assurance

For our tower crane, we provide 1 year warranty period and quick replace service.

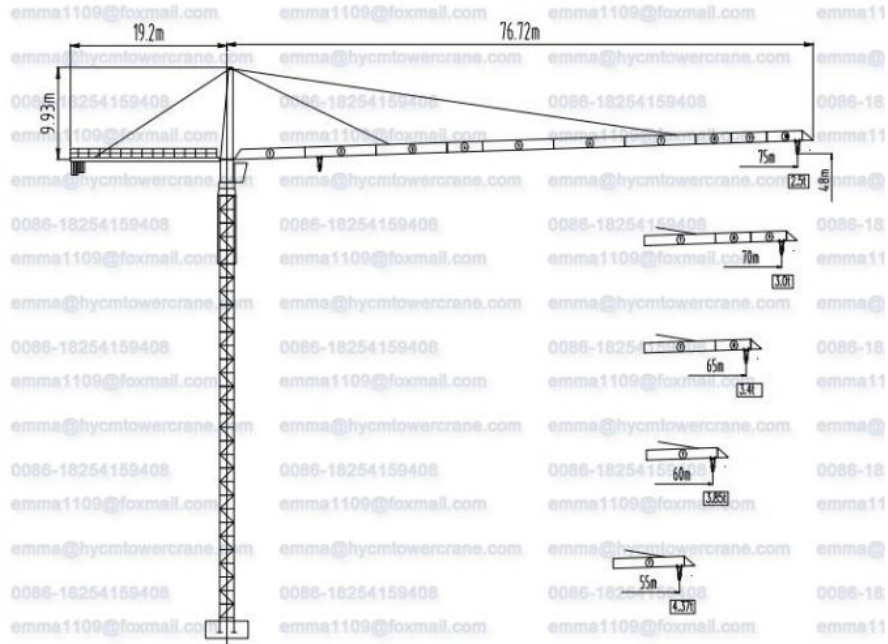
-----The Fastest Reply

Detailed information,specific model and price of products will be provided quickly after receiving inquiry.

Safety devices:

- 1): Hoist height limit
- 2): Over speed limit
- 3): Over load limit
- 4): Lifting moment limit
- 5): Slewing angle limit
- 7): Obstruction light (tip of jib, tower head)
- 8): Wind lock device.

Pictures



Jinan Avitt International Trade Co., Ltd-HYCM Tower Crane



0086-18254159408



emma1109@foxmail.com



hycmtowercrane.com

No.218-1, Building 8, Comprehensive Building, Zone 8, Dongshan Garden, Shuangshan Street, Zhangqiu District, Jinan City, Shandong Province, China