



50 mtr Jib Tower Crane Maximum Load 10 Tones Tip Load at 50 mtr 2.3 tones

Our Product Introduction

for more products please visit us on hycmtowercrane.com

Basic Information

- Place of Origin: China
- Brand Name: HYCM TOWER CRANE
- Certification: CE, ISO, GOST, CU-TR
- Model Number: TC5023 Topkit Tower Crane
- Minimum Order Quantity: 1
- Price: \$85900-103500 per set
- Packaging Details: Naked packing, 6*40'HQ containers.
- Delivery Time: 20 days after receiving the deposit or origin LC
- Payment Terms: TT, LC
- Supply Ability: 20 sets per month



Product Specification

- Condition: 100% New
- Application: Construction Buildings And Projects
- Type: Fixed And External Climbing
- Load: 10 Tons
- Jib: 50 Mtr
- Tip Load: 2.3 Tons
- Power supply: 380V/50Hz Or According To Client's Requirements
- Mast Section: L46 1.6*3m
- Electric Box: Schneider
- Power Supply: 380V/50Hz, 415V/50Hz, 220V/50Hz Or According To Clients Need



More Images



Product Description

50 mtr Jib Tower Crane Maximum Load 10 Tones Tip Load at 50 mtr 2.3 tones

Shot introduction

- 1.TC5023 Topkit Tower Crane
2. Type: fixed and external climbing
3. Jib length: 50m
4. Tip load: 2.3t
5. Max.laod:10t
- 6.Freestanding height:45m

Specification

Rated Lifting Moment	1250KN.m
Rated Loading Capacity	10t
Max. Lifting Load	10t
Tip Load	2.3t
Max. Lifting Height	200m
Span	50m
Free standing height	45m
Rope length	470m
Working range	3-50m
Slewing speed	0.6 or 0-0.6r/min
Trolley speed	60 or 0-60 m/min
Jacking-up speed	0.4 m/min
Hoisting speed(m/min)	(a=2) 0-3.8/38/76 (a=4) 0-1.9/19/38
Power supply	380V/50Hz or others
Power Capacity	61.5 kw
Electric switch box	Schneider
Main materials	180*18mm/Q345B
Mast section dimensions	1.6*1.6*3m (split)

Our advantage

1. 15 years of experience in supplying new external climbing tower crane with HYCM Brand.
2. Export to more than 20 countries with CE/ISO/GOST/CU-TR Certificates.
3. Stationary/Traveling and internal climbing type tower crane are available
4. Impeller blasting/rust protection paint
5. Advanced painting process
6. Strict and experience welding line
7. New designed mast, can be used to Internal and external climbing tower crane
8. Well known brand mechanism system, Schneider Electronic control system, Jjiangte and Jiuhe motor
9. Engineers available to service machinery overseas.
10. For warranty, it is 12 months from the B/L date. What's more, some free easy worn spare parts are provided together with the crane.

RAQ

1. Are you a manufacturer or a trading company?

We are as a professional manufacturer / factory since 2002 year for 16 years.

2. What is your advantage?

- 1) We are a manufacturer, so the price is more competitive than the trading company.
- 2) It is more effective to communicate with the factory, saving more time for you.
- 3) Timely after sales service
- 4) We also produce other construction machinery such as construction hoists, derrick cranes and ZLP Suspended Platform to meet your requirements.

3. How do you guarantee your product quality?

We have our professional testing department , and will test the machine all the progress, and will test it after finished and before delivery.

4. I plan to label our logo on your products, is that possible?

Sure it is ok. OEM is available for us. Just send your logo, brand name or picture to us.

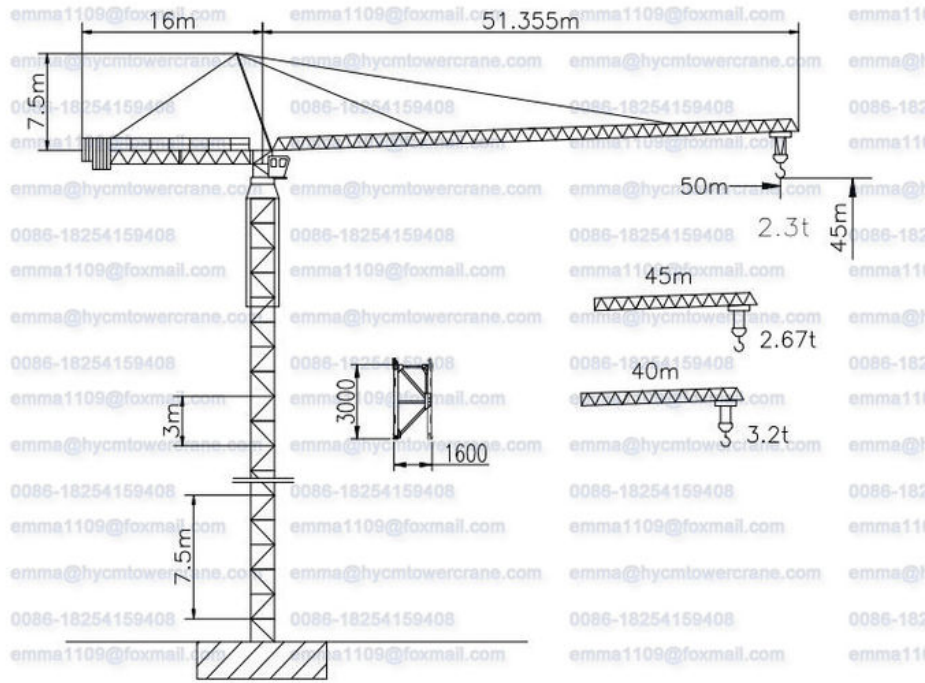
5. How about the warranty period ?

The warranty will be one year from the date of shipment. Any detected parts during this period caused by the quality of products will be replaced by seller free of cost (exclude wear and tie parts), improper operation and other man made reasons are excluded.

Pictures

起重量载荷表 Loading Capacity

R (m)	R (max) m	R (max) T	14	16	18	20	25	30	35	40	45	50
50	a=2	2.5~26.32	5	5	5	5	5	4.29	3.57	3.02	2.61	2.3
	a=4	2.5~13.79	10	9.84	8.58	7.65	6.78	5.25	4.22	3.5	2.95	2.54
45	a=2	2.5~26.85	5	5	5	5	5	4.39	3.65	3.1	2.67	
	a=4	2.5~14.34	10	10	8.9	7.83	6.93	5.36	4.32	3.58	3.03	2.6
40	a=2	2.5~27.48	5	5	5	5	5	4.52	3.77	3.2		
	a=4	2.5~14.8	10	10	9.17	8.05	7.15	5.54	4.45	3.7	3.13	



Jinan Avitt International Trade Co., Ltd-HYCM Tower Crane



0086-18254159408



emma1109@foxmail.com



hycmtowercrane.com

No.218-1, Building 8, Comprehensive Building, Zone 8, Dongshan Garden, Shuangshan Street, Zhangqiu District, Jinan City, Shandong Province, China