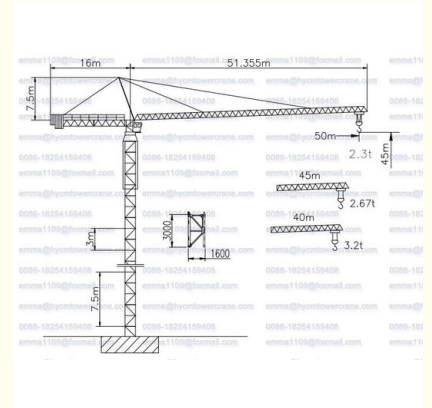




F0 23B Topkit Tower Crane 50m Working Jib 2.3tons End Load and 10t Capacity

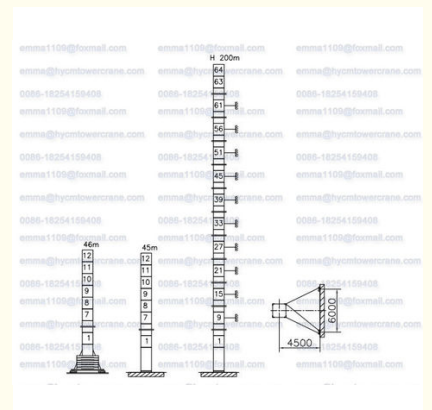
Basic Information

- Place of Origin: China
- Brand Name: HYCM TOWER CRANE
- Certification: CE, ISO, GOST, CU-TR
- Model Number: F0 23B Tower Crane
- Minimum Order Quantity: 1
- Price: \$85900-103500 per set
- Packaging Details: Naked packing, 6*40'HQ containers.
- Delivery Time: 20 days after receiving the deposit or origin LC
- Payment Terms: TT, LC
- Supply Ability: 20 sets per month



Product Specification

- Condition: 100% New
- Application: Construction Buildings And Projects
- Type: Topkit
- Capacity: 10t
- Working Jib: 50m
- End Load: 2.3tons
- Power supply: 380V/50Hz Or According To Client's Requirements
- Mast Section: 1.6*3m
- Electric Box: Schneider
- Power Supply: 380V/50Hz, 415V/50Hz, 220V/50Hz Or According To Clients Need



More Images

起重能力表 Loading Capacity												
吊钩高度 (m)	吊钩重量 (kg)	吊钩长度 (m)	吊钩宽度 (m)	吊钩厚度 (mm)	吊钩直径 (mm)	吊钩重量 (kg)	吊钩长度 (m)	吊钩宽度 (m)	吊钩厚度 (mm)	吊钩直径 (mm)	吊钩重量 (kg)	吊钩长度 (m)
10	25-26.32	5	5	5	5	420	305	102	248	223	11	10
20	25-27.76	10	10	10	10	820	560	420	320	290	22	20
30	25-29.20	15	15	15	15	1220	860	620	520	490	33	30
40	25-30.64	20	20	20	20	1620	1160	920	820	790	44	40
50	25-32.08	25	25	25	25	2020	1460	1220	1120	1090	55	50
60	25-33.52	30	30	30	30	2420	1760	1520	1420	1390	66	60
70	25-34.96	35	35	35	35	2820	2060	1820	1720	1690	77	70
80	25-36.40	40	40	40	40	3220	2360	2120	2020	1990	88	80
90	25-37.84	45	45	45	45	3620	2660	2420	2320	2290	99	90
100	25-39.28	50	50	50	50	4020	2960	2720	2620	2590	110	100

Product Description

F0 23B Topkit Tower Crane 50m Working Jib 2.3tons End Load and 10t Capacity

Shot introduction

- 1.QTZ125(TC5023) Topkit Tower Crane
2. Type: fixed and external climbing
3. Jib length: 50m
4. Tip load: 2.3t
5. Max.laod:10t
- 6.Freestanding height:45m

Specification

Rated Lifting Moment	1250KN.m
Rated Loading Capacity	10t
Max. Lifting Load	10t
Tip Load	2.3t
Max. Lifting Height	200m
Span	50m
Free standing height	45m
Rope length	470m
Working range	3-50m
Slewing speed	0.6 or 0-0.6r/min
Trolley speed	60 or 0-60 m/min
Jacking-up speed	0.4 m/min
Hoisting speed(m/min)	(a=2) 0-3.8/38/76 (a=4) 0-1.9/19/38
Power supply	380V/50Hz or others
Power Capacity	61.5 kw
Electric switch box	Schneider
Main materials	180*18mm/Q345B
Mast section dimensions	1.6*1.6*3m (split)

Our advantage

1. 15 years of experience in supplying new external climbing tower crane with HYCM Brand.
2. Export to more than 20 countries with CE/ISO/GOST/CU-TR Certificates.
3. Stationary/Traveling and internal climbing type tower crane are available
4. Impeller blasting/rust protection paint
5. Advanced painting process
6. Strict and experience welding line
7. New designed mast, can be used to Internal and external climbing tower crane
8. Well known brand mechanism system, Schneider Electronic control system, Jjiangte and Jiuhe motor
9. Engineers available to service machinery overseas.
10. For warranty, it is 12 months from the B/L date. What's more, some free easy worn spare parts are provided together with the crane.

Our Team

Our R&D team is made up of the most prestigious, experienced engineers and experts in this field. Our technicians team are all experienced senior mechanics.

We provide satisfactory service (pre-sale, while-sale, after-sale).

Our professional advice and instruction is always available.

Components

Tower cranes are used extensively in construction and other industry to hoist and move materials. There are many types of tower cranes. Although they are different in type, the main parts are the same, as follows:

Mast: the main supporting tower of the crane. It is made of steel trussed sections that are connected together during installation.

Slewing unit: the slewing unit sits at the top of the mast. This is the engine that enables the crane to rotate.

Operating cabin: the operating cabin sits just above the slewing unit. It contains the operating controls.

Jib: the jib, or operating arm, extends horizontally from the crane. A "luffing" jib is able to move up and down; a fixed jib has a rolling trolley that runs along the underside to move goods horizontally.

Hook: the hook (or hooks) is used to connect the material to the crane. It hangs at the end of thick steel cables that run along the jib to the motor.

Weights: Large concrete counterweights are mounted toward the rear of the mast, to compensate for the weight of the goods lifted.

Pictures



Jinan Avitt International Trade Co., Ltd-HYCM Tower Crane



0086-18254159408



emma1109@foxmail.com



hycmtowercrane.com

No.218-1, Building 8, Comprehensive Building, Zone 8, Dongshan Garden, Shuangshan Street, Zhangqiu District, Jinan City, Shandong Province, China