

D4015 Luffting Tower Crane 40m Boom 1.5T Top Load Specification

Our Product Introduction

for more products please visit us on hycmtowercrane.com

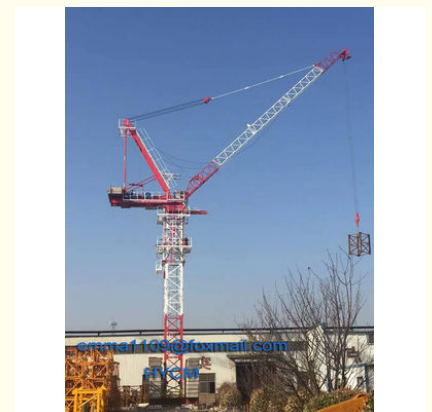
Basic Information

- Place of Origin: China
- Brand Name: HYCM TOWER CRANE
- Certification: CE, ISO, GOST, CU-TR
- Model Number: D4015 Luffting Tower Crane
- Minimum Order Quantity: 1 set
- Price: \$76500-86800 per set
- Packaging Details: Naked packing, 4*40'HQ containers.
- Delivery Time: 30 days after receiving the deposit or origin LC
- Payment Terms: TT, LC
- Supply Ability: 10 sets per month



Product Specification

- Application: Buildings And Projects
- Type: Fixed And External Climbing
- Load: 6 Tons
- Boom: 40m
- Top Load: 1.5t
- Power supply: 380V/50Hz Or According To Client's Requirements
- Mast section: 1.6*1.6*3m (split Type)
- Main Chord: 160*16mm (angle Steel)



More Images



Product Description

D4015 Luffting Tower Crane 40m Boom 1.5T Top Load Specification

Performance parameters

- Max. jib length: 40m;
- Max. lifting capacity 6t;
- Max. hoisting capacity at jib tip: 1.5t;
- Rated lifting moment: 800 Kn.m;
- Max. freestanding height: 35m; Max. working height of anchored crane: 160m;

Specification

Rated Lifting Moment	800KN.m
Rated Loading Capacity	6t
Max. Lifting Load	6t
Tip Load	1.5t
Free standing height	35m
Max. Lifting Height	162.2m
Working range	5.5-40m
Span	40m
Hoisting speed(m/min)	(a=2)80/40 (a=4)40/20
Slewing speed	0-0.7r/min
Luffing speed ((m/min))	0-10
Power supply	380V/50Hz or others
Electric switch box	Schneider
Mast section dimensions	1.2*1.2*3m(Block structure)
Main materials	160*16 mm/angled steel

Our Skilled Team

Our R&D team is made up of the most prestigious, experienced engineers and experts in this field. Our technicians team are all experienced senior mechanics.

We provide satisfactory service (pre-sale, while-sale, after-sale).

Our professional advice and instruction are always available and acceptable.

Competitive Advantage

Light structure, good stability, convenient transportation; Mast sections are SAW welding, safe and reliable. Advanced mechanisms, equipped with various safety devices, mechanical or Mechatronics products work in wretched conditions to keep tower cranes work well.

Equipped with excellent safety devices produced by world-class technology, including weight limiter, moment limiter, height limiter, radius limiter, slewing limiter, slewing and trolleying brakes.

Anti-broken wire rope device and anti-broken shaft device

Advanced electronic appliances.

RAQ

1. Are you a manufacturer or a trading company?

We are as a professional manufacturer / factory since 2002 year for 16 years.

2. What is your advantage?

1) We are a manufacturer, so the price is more competitive than the trading company.

2) It is more effective to communicate with the factory, saving more time for you.

3) Timely after sales service

4) We also produce other construction machinery such as construction hoists, derrick cranes and ZLP Suspended Platform to meet your requirements.

3. How do you guarantee your product quality?

We have our professional testing department, and will test the machine all the progress, and will test it after finished and before delivery.

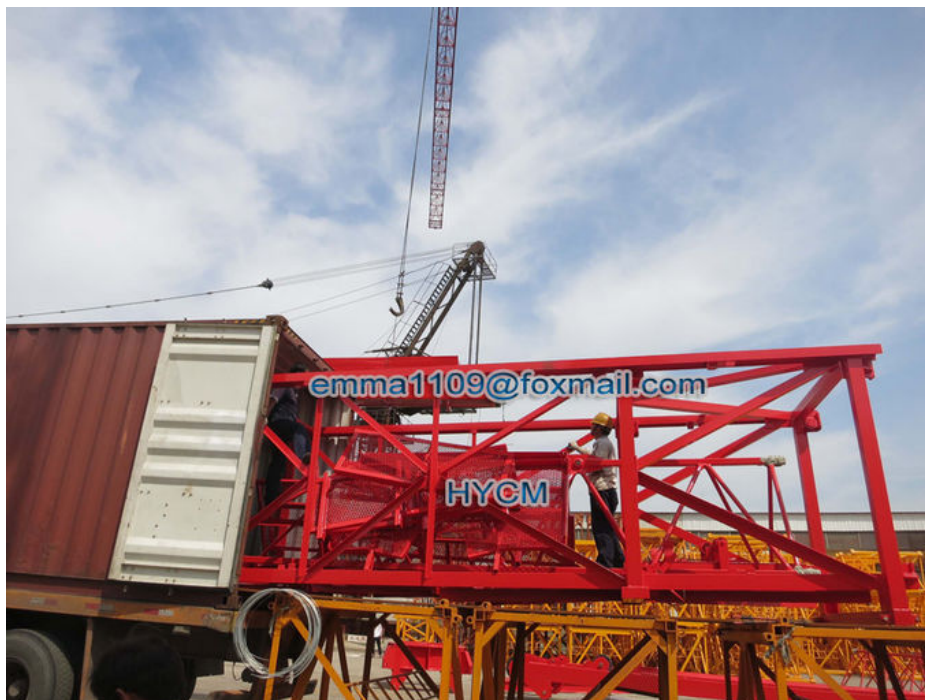
4. I plan to label our logo on your products, is that possible?

Sure it is ok. OEM is available for us. Just send your logo, brand name or picture to us.

5. How about the warranty period?

The warranty will be one year from the date of shipment. Any detected parts during this period caused by the quality of products will be replaced by seller free of cost (exclude wear and tie parts), improper operation and other man made reasons are excluded.

Potos



Jinan Avitt International Trade Co., Ltd-HYCM Tower Crane



0086-18254159408



emma1109@foxmail.com



hycmtowercrane.com

No.218-1, Building 8, Comprehensive Building, Zone 8, Dongshan Garden, Shuangshan Street, Zhangqiu District, Jinan City, Shandong Province, China