



2*1tons OEM Electric Construction Material Hoist Wire Rope Factory Price

Our Product Introduction

for more products please visit us on hycmtowercrane.com

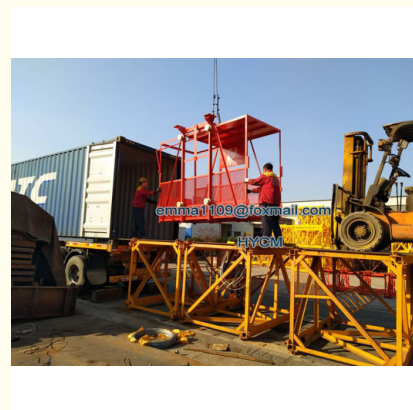
Basic Information

- Place of Origin: China
- Brand Name: HYCM or XINGDAO
- Certification: CE, ISO
- Model Number: SC Building Hoist
- Minimum Order Quantity: 1 set
- Price: \$8500-9900 per set
- Packaging Details: Naked packing, 1*40'HQ containers.
- Delivery Time: 10 days after receiving the deposit or origin LC
- Payment Terms: Western Union, L/C, T/T
- Supply Ability: 40 sets per month

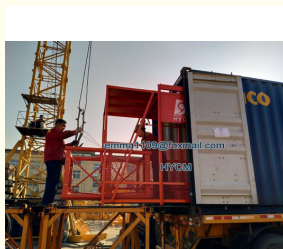
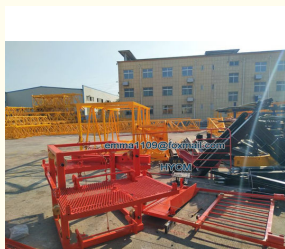


Product Specification

- Condition: 100% New
- Application: Buildings And Projects
- Type: Two Cage
- Load: 2t
- Max. Height: 24-56m
- Rated Speed: 23.5m/min
- Power supply: 380V/50Hz Or According To Client's Requirements
- Motor Power: 2*7.5kw
- Motor Brand: Xingxiang, Sanshang, Juli Or Other
- Mast: 800MM



More Images



Product Description

2*1tons OEM Electric Construction Material Hoist Wire Rope Factory Price

Introduction

1. The Elevator is designed for materials transport.
2. It offers, efficiency, safety, reduced energy consumption and low operating costs, making it the ideal hoist solution for construction and rental companies.
3. A modern microprocessor hoist control system with stop-next-landing control allows for simple operation and ease of use. While a hoist capacity of 2,000 kg offers increased transport capacity at a low cost.
4. With a larger hoist car, higher speeds and increased lifting heights, the SS100/100 is the perfect hoist solution for high-demand and high-rise construction.
5. The ground winch as a driving force, composed of mast sections and climbing frame, hanging basket (cage) between the mast sections along the track for vertical movement of the hoist

Specification

No.	Item	Unit	Value	Note
1	Rated load	Kg	1000×2	
2	Rated lifting speed	M/min	23.5	
3	Max. Lifting height	m	56	
4	Diameter of hoisting wire rope	mm	Φ12	Wire rope type
5	Diameter of counter-weight wire rope	mm	/	No counter-weight
6	Motor type	/	ZD41-4	
7	Motor power	KW	7.5×2	
8	Anti-falling device	Type	/	JSF-15
		Rated break load	KN	15
		Break distance	mm	≤100
9	Height of the free end	m	7.5	
10	Cage weight	Kg	542	
11	Mast section weight	Kg	130	
12	Counter-weight weight	Kg	/	No
13	Cage clearance dimensions (L*W*H)	mm	3000×1300×2040	
14	Mast section size (L*W*H)	mm	800×800×1508	
15	Main chord material	mm	φ76×5/20 [#]	
16	Total weight	Kg	9820	H=60.5m

Distinctive Features

1. Safety protection device is complete and reliable. For safety device with national patent technology, make the machine working reliability among the top of the same products.
 2. Modular design, through different collocation, different speed, different lifting weight can be combined from the elevator specifications. The product standard, practicability and generalization are greatly improved.
 3. Smooth operation and comfort. Because the machine will be top drive unit in the cage, cage net space increases; At the same time also make driving more smoothly, mechanical vibration, brings to the operation staff a comfortable and spacious environment.
- Use this machine is a wise choice, you set the construction lifter can become your modernization construction's right-hand man, for your construction efficiency.

Safety device:

1. Overweight protection
2. Phase sequence protection
3. Safety door protection
4. Interlayer protection
5. Motor reverse protection
6. Mechanical anti-roll top protection
7. Sensor failure protection
8. Motor short circuit or overload protection
9. Bell output function
10. Data protection

Picture



Jinan Avitt International Trade Co., Ltd-HYCM Tower Crane



0086-18254159408



emma1109@foxmail.com



hycmtowercrane.com

No.218-1, Building 8, Comprehensive Building, Zone 8, Dongshan Garden, Shuangshan Street, Zhangqiu District, Jinan City, Shandong Province, China