



8tonnes 165ft Luffing Jib Tower Crane 50m Working Arm Full VFD Control

Our Product Introduction

for more products please visit us on hycmtowercrane.com

Basic Information

- Place of Origin: China
- Brand Name: HYCM
- Certification: CE, ISO, GOST, CU-TR
- Model Number: QTD5015 Luffing Tower Crane
- Minimum Order Quantity: 1 set
- Price: \$107900-113500 per set
- Packaging Details: Naked packing, 6*40'HQ containers.
- Delivery Time: 30 days after receiving the deposit or origin LC
- Payment Terms: TT, LC
- Supply Ability: 10 sets per month

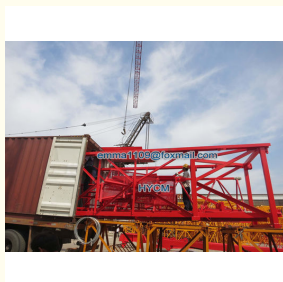


Product Specification

- Application: Buildings And Projects
- Type: Fixed With Tower Head
- Load: 8tonnes
- Luffing Jib: 165ft
- Working Arm: 50m
- Power supply: 380V/50Hz Or According To Client's Requirements
- Mast section: 1.6*1.6*3 M (split Type)
- Main Chord: 180*18 Mm (angle Steel)
- Highlight: 8tonnes luffing jib tower crane, 165ft luffing jib crane with VFD control, 50m working arm tower crane



More Images



Product Description

8tonnes 165ft Luffing Jib Tower Crane 50m Working Arm Full VFD Control

Performance parameters

- Max. jib length: 50m;
- Max. lifting capacity 8t;
- Max. hoisting capacity at jib tip: 1.5t;
- Rated lifting moment: 1200 Kn.m;
- Max. freestanding height: 27m; Max. working height of anchored crane: 160m;

Specification

Model	QTD120 (5015) Luffing Tower Crane	
Working Radius (m)	50	
Max. Load Capacity (T)	8	
Tip Load (T)	1.5	
Free standing height (m)	37	
Max. Height with anchorages (m)	160	
Mast Section dimension (m)	1.6×1.6×3, angle steel 180×18mm	
Hoisting Mechanism	Speed (m/min)	0-80 -040
	Motor power (kw)	24/24/5.4
Slewing Mechanism	Speed (r/min)	0-0.6
	Motor power (kw)	2×3.7
Trolleying Mechanism	Speed (m/min)	0-10
	Motor power (kw)	30
Jacking-up System	Speed (m/min)	0.4
	Motor power (kw)	7.5
Total Power (kw)	34	
Power Supply	380V/50Hz or according to clients needs	

Commercial Terms

Price: Negotiable

Delivery time: 30 days after receiving 30% advanced payment

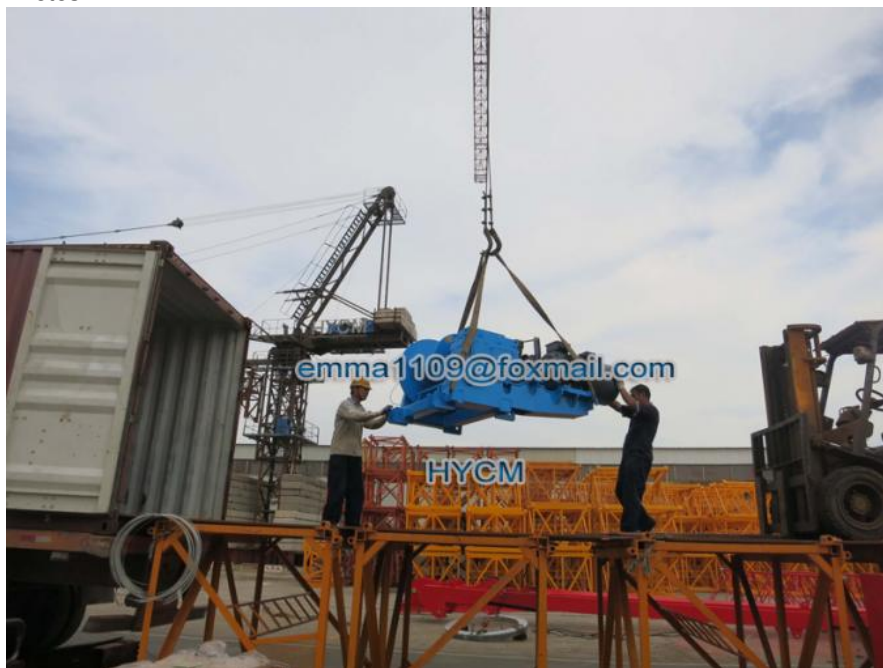
Trade terms: FOB (qingdao) Or CFR, CIF according to Clients needs

Terms of Payment: T/T or L/C (30% advanced payment, 70% before shipment)

Packing: Standard Exporting Packing

Warranty: At least 12 months

Photos





Jinan Avitt International Trade Co., Ltd-HYCM Tower Crane



0086-18254159408



emma1109@foxmail.com



hycmtowercrane.com

No.218-1,Building 8, Comprehensive Building, Zone 8, Dongshan Garden, Shuangshan Street, Zhangqiu District, Jinan City, Shandong Province, China