



Large Luffing Crane Tower QTD6037 Construction Building Crane 16000kg

Our Product Introduction

for more products please visit us on hycmtowercrane.com

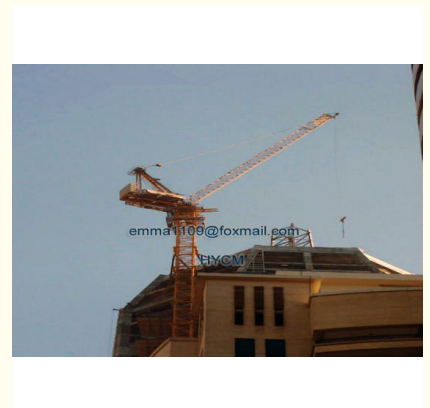
Basic Information

- Place of Origin: China
- Brand Name: HYCM TOWER CRANE
- Certification: CE, ISO, GOST, CU-TR
- Model Number: QTD300(6037) Luffing Tower Crane
- Minimum Order Quantity: 1 set
- Price: \$196 00-201100 per set
- Packaging Details: Naked packing, 10*40'HQ containers.
- Delivery Time: 35 days after receiving the deposit or origin LC
- Payment Terms: TT, LC
- Supply Ability: 2 sets per month

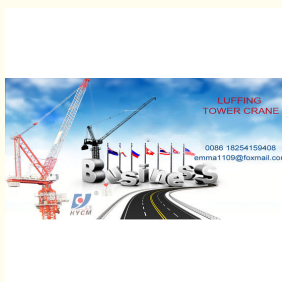


Product Specification

- Application: Buildings And Projects
- Type: Fixed With Tower Head
- Max. Load: 16 T
- Jib Length: 60 M
- Tip. Load: 3.7 T
- Power supply: 380V/50Hz Or According To Client's Requirements
- Mast section: 2.45*2.45*5 M (split Type)
- Main Chord: 180*18 Mm (angle Steel)



More Images



Product Description

Large Luffing Crane Tower QTD6037 Construction Building Crane 16000kg

Short Parameter

- 1.QTD300(6037) Luffing Tower Crane
2. Type: fixed and external climbing
3. jib length: 60m
4. tip load: 3.7t
5. max.laod: 16t
- 6..freestanding height: 40m

Description

- a. Developed by us combined with advanced international technology in tower crane industry.
- b. Self-telescoping, top slewing and Luffing from 15-85 degree for lifting jib.
- c. Complete safety devices makes an excellent performance.
- d. Easy to assemble and disassemble with a pin system.
- e. Advanced technology applied in the mechanisms and control system. What's more, VFD control for three mechanism.
- f. High reliability and easy maintenance.

Specification

Model	QTD300(6037) Luffing Jib Tower Crane
Rated Lifting Moment (KN.M)	3000
Max. Lifting Load (t)	16
Tip Load (t)	3.7
Max. Lifting Height (m)	260
Freestanding height (m)	55
Span (m)	60
Working range (m)	5 to 60
Slewing speed (r/min)	0-0.57
Trolley speed (m/min)	0-10
Jacking-up speed (m/min)	0.4
Power supply	380V/50Hz or according to client's requirements
Power Capacity (kw)	128
Electric switch box	Schneider
Hoisting speed (m/min)	(a=2) 0-100; (a=4) 0-50
Mast section (m)	2.45*2.45*5 (180*18mm /angle steel, inside quare with rib)

Advantage

Good Quality: Certification with ISO & CE

Best price: Best offer directly from manufacture with suitable payment terms.

Good Sale Service: Technician provided to assistant installment and commission.

Delivery on Time: Report order progress immediately to make sure Delivery on time.

Warranty: 12 months from the BL date.
Three Mechansims and full sets safety device

Photos





Jinan Avitt International Trade Co., Ltd-HYCM Tower Crane



0086-18254159408



emma1109@foxmail.com



hycmtowercrane.com

No.218-1,Building 8, Comprehensive Building, Zone 8, Dongshan Garden, Shuangshan Street, Zhangqiu District, Jinan City, Shandong Province, China